



Catalogue 2024
by piegatto

Click here *or click back on the picture*

Rest chairs

Sofas

Dining chairs

Stools

Benches

Coffee tables

Tables

Lamps

Threads

Sculptures

Screens

Colors

Circles of time

When you gaze you discover

see thru me and adjust

FOCUS...

every part creates the big Idea!



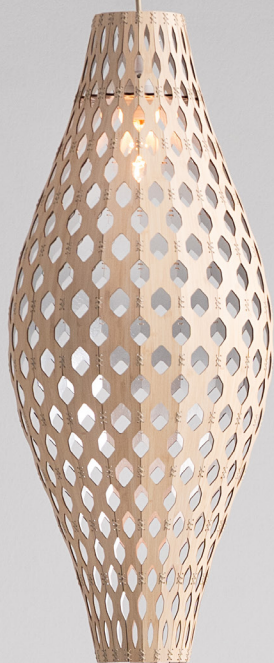








Products and facts





Soave Rocking / SSR 10017

Dimensions

W - 73.8 cm / 29.1"

H - 82 cm / 32.3"

L - 79.5 cm / 31.3"

Seating height

42.5 cm / 16.7"

Arm Height

68.4 cm / 26.9"

N. pieces

41

Wood thickness

18.5 mm

Net weight

65 lb / 29.5 kg

Capacity

350 lb / 159 kg



Soave / SSV 10015

Dimensions

W - 75.8 cm / 29.8"

H - 80.5 cm / 31.7"

L - 78.5 cm / 30.9"

Seating height

41.5 cm / 16.3"

Arm Height

67 cm / 26.4"

N. pieces

41

Wood thickness

18.5 mm

Net weight

56 lb / 25.3 kg

Capacity

350 lb / 159 kg



Pipo / SPI 10001

Dimensions

W - 68.5 cm / 27"

H - 85.3 cm / 33.6"

L - 78.8 cm / 31"

Seating height

39.6 cm / 15.6"

Arm Height

63.8 cm / 25.1"

N. pieces

37

Wood thickness

18.5 mm

Net weight

45 lb / 20.5 kg

Capacity

350 lb / 159 kg



Pipo Cord / SPC 10015

Dimensions

W - 64 cm / 25.2"

H - 84 cm / 33.1"

L - 84 cm / 33.1"

Seating height

38 cm / 15"

Wood thickness

18.5 mm

Net weight

25 lb / 11.4 kg

Capacity

250 lb / 114 kg



Riddle / SRI 10013

Dimensions

W - 75.8 cm / 29.8"

H - 70.3 cm / 27.7"

L - 75 cm / 29.5"

Seating height

38.5 cm / 15.2"

N. pieces

41

Wood thickness

18.5 mm

Net weight

85 lb / 38.7 kg

Capacity

350 lb / 159 kg



Palm / SPL 10016

Dimensions

W - 86 cm / 33.8"

H - 85 cm / 33.5"

L - 83 cm / 32.6"

Seating height

38.5 cm / 15.2"

N. pieces

65

Wood thickness

18.5 mm

Net weight

55 lb / 25 kg

Capacity

350 lb / 159 kg



FOGLI

Dimensions

W - 79 cm / 31"
H - 90 cm / 35"
L - 97 cm / 38"

Net weight

75 lb / 34 kg

Capacity

300 lb / 136 kg

Seating height

36 cm / 14.2"

Arm Height

60.4 cm / 23.8"

Width tolerance

+/- 5mm



HOLDME

Dimensions

W - 77 cm / 30"
H - 92 cm / 36"
L - 100 cm / 39"

Net weight

75 lb / 34 kg

Capacity

300 lb / 136 kg

Seating height

36 cm / 14.2"

Arm Height

60.4 cm / 23.8"

Width tolerance

+/- 5mm



Neca / SNE 10007

Dimensions

W - 74 cm / 29.1"

H - 99.3 cm / 39.1"

L - 140 cm / 55.1"

Seating height

39.3 cm / 15.5"

N. pieces

40

Wood thickness

18.5 mm

Net weight

80 lb / 36.4 kg

Capacity

350 lb / 159 kg



Lolo / SCL 10004

Dimensions

W - 69 cm / 27.2"

H - 86.4 cm / 34"

L - 145 cm / 57.1"

Seating height

25.7 cm / 10.1"

N. pieces

38

Wood thickness

18.5 mm

Net weight

80 lb / 36.4 kg

Capacity

350 lb / 159 kg



Vic Rocking / SVC 10008

Dimensions

W - 70.3 cm / 27.7"

H - 97 cm / 38.2"

L - 103.4 cm / 40.7"

Seating height

36 cm / 14.2"

Arm Height

60.4 cm / 23.8"

N. pieces

39

Wood thickness

18.5 mm

Net weight

72 lb / 32.7 kg

Capacity

350 lb / 159 kg



Soave Lounge / SSC 10016



Dimensions

W - 113 cm / 44.5"

H - 70.4 cm / 27.7"

L - 93.4 cm / 36.8"

Seating height

40.5 cm / 15.9"

Arm Height

61 cm / 24"

N. pieces

61

Wood thickness

18.5 mm

Net weight

83 lb / 37.8 kg

Capacity

350 lb / 159 kg

Soave Love Seat / SLS 10029



Dimensions

W - 160 cm / 63"

H - 76.7 cm / 30.2"

L - 96 cm / 37.8"

Seating height

40.5 cm / 15.9"

Arm Height

58.2 cm / 22.9"

N. pieces

89

Wood thickness

18.5 mm

Net weight

100 lb / 45.3 kg

Capacity

700 lb / 318 kg

SOAVE CURVE



Dimensions

W - 231 cm / 90.9"
H - 75 cm / 29.5"
L - 139 cm / 54.7"

Net weight

200 lb / 90.9 kg

Capacity

350 lb / 159 kg

Seating height

40.5 cm / 15.9"

Arm Height

62.5 cm / 24.6"

Width tolerance

+/- 5mm

Soave Chaise Longue / SSC 10019



Dimensions

W - 170 cm / 66.9"
H - 73 cm / 28.7"
L - 88 cm / 34.6"

N. pieces

92

Wood thickness

18.5 mm

Seating height

40.3 cm / 15.9"

Net weight

100 lb / 45.3 kg

Arm Height

66 cm / 26"

Capacity

700 lb / 318 kg

Soave Sectional Sofa / SSS 10017



Dimensions

W - 277.5 cm / 109.3"

H - 74.2 cm / 29.2"

L - 89.7 cm / 35.3"

Seating height

40.5 cm / 15.9"

Arm Height

62.5 cm / 24.6"

N. pieces

150

Wood thickness

18.5 mm

Net weight

239 lb / 108.4 kg

Capacity

350 lb / 159 kg

Soave Sectional Sofa With Corner / SSS 10018



Dimensions

W - 292.3 cm / 115.1"

H - 74.2 cm / 29.2"

L - 150.6 cm / 59.3"

Seating height

41 cm / 16.1"

Arm Height

60.7 cm / 23.9"

N. pieces

158

Wood thickness

18.5 mm

Net weight

285 lb / 129.5 kg

Capacity

350 lb / 159 kg

Faba Sofa With Corner / SFC 10033



Dimensions

W - 216.1 cm / 85.1"

H - 75.9 cm / 29.9"

L - 265.2 cm / 104.4"

Seating height

40 cm / 15.7"

N. pieces

176

Wood thickness

4.3 mm

Net weight

250 lb / 113.6 kg

Capacity

350 lb / 159 kg

Faba Sofa / SFL 10032



Dimensions

W - 137.5 cm / 54.1"

H - 75.9 cm / 29.9"

L - 285.9 cm / 112.6"

Seating height

40 cm / 15.7"

N. pieces

176

Wood thickness

4.3 mm

Net weight

180 lb / 81.8 kg

Capacity

350 lb / 159 kg

Faba Chaise / SFC 10031



Dimensions

W - 98.4 cm / 38.7"

H - 75.9 cm / 29.9"

L - 228 cm / 89.9"

Seating height

40 cm / 15.7"

N. pieces

176

Wood thickness

4.3 mm

Net weight

100 lb / 45.5 kg

Capacity

350 lb / 159 kg

Faba Love Seat / SFL 10030



Dimensions

W - 95.2 cm / 37.5"

H - 75.9 cm / 29.9"

L - 173.7 cm / 68.4"

Seating height

40 cm / 15.7"

N. pieces

176

Wood thickness

4.3 mm

Net weight

75 lb / 34.1 kg

Capacity

350 lb / 159 kg

Boomerang Sofa with corner / SBC 10024



Dimensions

W - 303 cm / 119.3"

H - 67 cm / 26.4"

L - 227 cm / 89.4"

Net weight

160 lb / 73 kg

Capacity

350 lb / 159 kg

Seating height

39 cm / 15.4"

Boomerang Sofa / SBO 10023



Dimensions

W - 283 cm / 111.4"

H - 67 cm / 26.4"

L - 112 cm / 44.1"

Net weight

120 lb / 55 kg

Capacity

350 lb / 159 kg

Seating height

39 cm / 15.4"

Boomerang Love Seat / SLB 10022



Dimensions

W - 181 cm / 71.3"

H - 65 cm / 25.6"

L - 103 cm / 40.6"

Net weight

80 lb / 36 kg

Capacity

350 lb / 159 kg

Seating height

39 cm / 15.4"

Modular Cube corner / SMC 10025



Dimensions

W - 100 cm / 39.4"

H - 68 cm / 26.8"

L - 100 cm / 39.4"

Seating height

42 cm / 16.5"

Net weight

50 lb / 23 kg

Capacity

350 lb / 159 kg

Modular Cube center / SMC 10026



Dimensions

W - 100 cm / 39.4"

H - 68 cm / 26.8"

L - 90 cm / 35.4"

Seating height

42 cm / 16.5"

Net weight

45 lb / 20 kg

Capacity

350 lb / 159 kg

Modular Cube otoman / SMC 10027



Dimensions

W - 90 cm / 35.4"

H - 42 cm / 16.5"

L - 90 cm / 35.4"

Seating height

42 cm / 16.5"

Net weight

40 lb / 18 kg

Capacity

350 lb / 159 kg

DINING CHAIRS





Aida / SAA 10109

Dimensions

W - 64.5 cm / 25.4"

H - 88 cm / 34.6"

L - 76 cm / 29.9"

Seating height

46 cm / 18.1"

Arm Height

59 cm / 23.2"

N. pieces

43

Wood thickness

15 mm

Net weight

41 lb / 18.6 kg

Capacity

300 lb / 136 kg



Pipa / SPA 10106

Dimensions

W - 61 cm / 24"

H - 89.5 cm / 35.2"

L - 61 cm / 24"

Seating height

46.7 cm / 18.4"

Arm Height

65 cm / 25.6"

N. pieces

33

Wood thickness

18.5 mm

Net weight

41 lb / 18.8 kg

Capacity

300 lb / 136 kg

PALM DINING



Dimensions

W - 64.3 cm / 25.3"
H - 85.6 cm / 33.7"
L - 80 cm / 31.5"

Net weight

41 lb / 18.6 kg

Capacity

300 lb / 136 kg

Seating height

46 cm / 18.1"

Width tolerance

+/- 5mm

Dining S / SDS 10101



Dimensions

W - 42 cm / 16.5"
H - 89.7 cm / 35.3"
L - 60.2 cm / 23.7"

N. pieces

28

Wood thickness

15 mm

Seating height

47 cm / 18.5"

Net weight

24 lb / 10.7 kg

Capacity

300 lb / 136 kg



S Cord / SSC 10104

Dimensions

W - 47.6 cm / 18.7"

H - 90.3 cm / 35.6"

L - 64 cm / 25.2"

Seating height

47 cm / 18.5"

Wood thickness

18.5 mm

Net weight

20 lb / 9.1 kg

Capacity

250 lb / 114 kg



Lines S / SLS 10113

Dimensions

W - 42 cm / 16.5"

H - 82.7 cm / 32.6"

L - 58.6 cm / 23.1"

Seating height

46 cm / 18.1"

N. pieces

25

Wood thickness

15 mm

Net weight

25 lb / 11.4 kg

Capacity

300 lb / 136 kg

Lines Wood / SLI 10110



Dimensions

W - 42 cm / 16.5"

H - 78 cm / 30.7"

L - 61 cm / 24"

Seating height

46 cm / 18.1"

N. pieces

28

Wood thickness

15 mm

Net weight

24 lb / 11 kg

Capacity

300 lb / 136 kg

Y / SY 10112



Dimensions

W - 41 cm / 16.1"

H - 79 cm / 31.1"

L - 59 cm / 23.2"

Seating height

47 cm / 18.5"

N. pieces

22

Wood thickness

18.5 mm

Net weight

25 lb / 11 kg

Capacity

250 lb / 114 kg

STOOLS





Felix / SFX 10210

Dimensions

W - 41.4 cm / 16.3"

H - 44 cm / 17.3"

L - 45 cm / 17.7"

Seating height

44 cm / 17.3"

N. pieces

23

Wood thickness

18.5 mm

Net weight

12 lb / 5.5 kg

Capacity

250 lb / 114 kg



C / SCS 10201

Dimensions

W - 55.5 cm / 21.9"

H - 44 cm / 17.3"

L - 44 cm / 17.3"

Seating height

44 cm / 17.3"

N. pieces

30

Wood thickness

18.5 mm

Net weight

12 lb / 5.5 kg

Capacity

250 lb / 114 kg



Lina Counter / SLK 10206

Dimensions

W - 45 cm / 17.7"

H - 95.6 cm / 37.6"

L - 58.2 cm / 22.9"

Seating height

67 cm / 26.4"

Foot Height

20.5 cm / 8.1"

N. pieces

30

Wood thickness

15 mm

Net weight

37 lb / 16.8 kg

Capacity

250 lb / 114 kg



Lina Bar / SLB 10209

Dimensions

W - 45 cm / 17.7"

H - 105.6 cm / 41.6"

L - 58.2 cm / 22.9"

Seating height

77.3 cm / 30.4"

Foot Height

30.5 cm / 12"

N. pieces

30

Wood thickness

15 mm

Net weight

43 lb / 19.4 kg

Capacity

250 lb / 114 kg

PAPAGAYO



Dimensions

W - 45 cm / 17.7"
H - 95.6 cm / 37.6"
L - 58.2 cm / 22.9"

Net weight

37 lb / 16.8 kg

Capacity

250 lb / 114 kg

Seating height

67 cm / 26.4"

Foot Height

20.5 cm / 8.1"

Width tolerance

+/- 5mm





Sweep Small / SSW 10206

Dimensions

W - 42.5 cm / 16.7"

H - 44 cm / 17.3"

L - 180 cm / 70.9"

N. pieces

23

Wood thickness

18.5 mm

Net weight

61 lb / 27.7 kg

Capacity

500 lb / 227 kg



Sweep Medium / SSW 10204

Dimensions

W - 51.8 cm / 20.4"

H - 44 cm / 17.3"

L - 213 cm / 83.9"

N. pieces

28

Wood thickness

18.5 mm

Net weight

86 lb / 39.2 kg

Capacity

700 lb / 318 kg



Sweep Large / SSW 10205

Dimensions

W - 51.8 cm / 20.4"

H - 44 cm / 17.3"

L - 242.5 cm / 95.5"

N. pieces

28

Wood thickness

18.5 mm

Net weight

99 lb / 45 kg

Capacity

700 lb / 318 kg

Sweep X Large / SSW 10206



Dimensions

W - 51.8 cm / 20.4"

H - 44 cm / 17.3"

L - 280 cm / 110.2"

N. pieces

28

Wood thickness

18.5 mm

Net weight

114 lb / 51.8 kg

Capacity

700 lb / 318 kg



Arches Small / SSA 10210

Dimensions

W - 46.3 cm / 18.2"

H - 45 cm / 17.7"

L - 180 cm / 70.9"

N. pieces

25

Wood thickness

18.5 mm

Net weight

61 lb / 27.7 kg

Capacity

500 lb / 227 kg



Arches Large / SSA 10209

Dimensions

W - 46.3 cm / 18.2"

H - 45 cm / 17.7"

L - 240 cm / 94.5"

N. pieces

25

Wood thickness

18.5 mm

Net weight

99 lb / 45 kg

Capacity

700 lb / 318.2 kg

Arches X Large / SSA 10208

Dimensions

W - 46.3 cm / 18.2"

H - 45 cm / 17.7"

L - 280 cm / 110.2"

N. pieces

25

Wood thickness

18.5 mm

Net weight

114 lb / 51.8 kg

Capacity

700 lb / 318 kg



Martin / SMR 10211

Dimensions

W - 112 cm / 44.1"

H - 44 cm / 17.3"

L - 222 cm / 87.4"

N. pieces

123

Wood thickness

18.5 mm

Net weight

150 lb / 68.2 kg

Capacity

700 lb / 318 kg



Maris / SMI 10212



Dimensions

W - 81 cm / 31.9"

H - 44 cm / 17.3"

L - 300 cm / 118.1"

N. pieces

165

Wood thickness

18.5 mm

Net weight

150 lb / 68.2 kg

Capacity

700 lb / 318 kg





Candy X Large / TCY 20016

Dimensions

W - 101.7 cm / 40"

H - 33 cm / 13"

L - 203 cm / 79.9"

N. pieces

55

Wood thickness

18.5 mm

Net weight

78 lb / 35.5 kg

Glass Dimensions

*Not included

W - 160 cm / 63"

L - 283 cm / 111.4"

T - 19mm



Candy Medium / TCY 20015

Dimensions

W - 120 cm / 47.2"

H - 33.5 cm / 13.2"

L - 120 cm / 47.2"

N. pieces

65

Wood thickness

18.5 mm

Net weight

67 lb / 30.5 kg

Glass Dimensions

*Not included

W - 180 cm / 70.9"

L - 180 cm / 70.9"

T - 19mm

Candy Small / TCY 20021



Dimensions

W - 60 cm / 23.6"

H - 33.5 cm / 13.2"

L - 100 cm / 39.4"

N. pieces

32

Wood thickness

18.5 mm

Net weight

30 lb / 13.6 kg

Glass Dimensions

*Not included

W - 120 cm / 47.2"

L - 160 cm / 63"

T - 19mm

Vortex Coffee Table Set

Small, Medium, Large and XLarge.



Vortex Small / TBT 20017

Dimensions

W - 64.5 cm / 25.4"

H - 20.3 cm / 8"

L - 75 cm / 29.5"

N. pieces

11

Wood thickness

18.5 mm

Net weight

15 lb / 6.8 kg



Vortex Medium / TBT 20018



Dimensions

W - 84.3 cm / 33.2"

H - 35.1 cm / 13.8"

L - 99 cm / 39"

N. pieces

19

Wood thickness

18.5 mm

Net weight

40 lb / 18.2 kg

Vortex Large / TBT 20019



Dimensions

W - 87 cm / 34.3"

H - 31.5 cm / 12.4"

L - 120 cm / 47.2"

N. pieces

17

Wood thickness

18.5 mm

Net weight

45 lb / 20.5 kg

Vortex X Large / TBT 20020



Dimensions

W - 80 cm / 31.5"

H - 25.9 cm / 10.2"

L - 150 cm / 59.1"

N. pieces

14

Wood thickness

18.5 mm

Net weight

42 lb / 19.1 kg

Cheese Small / TCH 20007



Dimensions

W - 69 cm / 27.2"

H - 24 cm / 9.4"

Wood thickness

18.5 mm

Net weight

20 lb / 9.1 kg

Cheese Large / TCH 20008



Dimensions

W - 97 cm / 38.2"

H - 35.1 cm / 13.8"

Wood thickness

18.5 mm

Net weight

30 lb / 13.6 kg

Circular Coffee Table Set

Small, Medium and Large



Circular Small / TCI 20009



Dimensions

W - 60 cm / 23.6"

H - 20.3 cm / 8"

N. pieces

9

Wood thickness

18.5 mm

Net weight

10 lb / 4.5 kg

Circular Medium / TCI 20010



Dimensions

W - 80 cm / 31.5"

H - 25.9 cm / 10.2"

N. pieces

11

Wood thickness

18.5 mm

Net weight

20 lb / 9.1 kg

Circular Large / TCI 20011



Dimensions

W - 120 cm / 47.2"

H - 35.1 cm / 13.8"

N. pieces

15

Wood thickness

18.5 mm

Net weight

40 lb / 18.2 kg

Circular Tall / TCI 20012



Dimensions

W - 60 cm / 23.6"

H - 46.2 cm / 18.2"

N. pieces

20

Wood thickness

18.5 mm

Net weight

25 lb / 11.4 kg

Pebbles Coffee Table Set

Small, Medium, Large and XLarge



Pebbles Small / TPB 20021



Dimensions

W - 62 cm / 24.4"

H - 18 cm / 7.1"

L - 65 cm / 25.6"

Wood thickness

18.5 mm

Net weight

20 lb / 9.1 kg

N. pieces

10



Pebbles Medium / TPB 20021

Dimensions

W - 88 cm / 34.6"

H - 23.4 cm / 9.2"

L - 88 cm / 34.6"

Wood thickness

18.5 mm

Net weight

35 lb / 15.9 kg

N. pieces

13



Pebbles Large / TPB 20021

Dimensions

W - 67 cm / 26.4"

H - 43.2 cm / 17"

L - 67 cm / 26.4"

Wood thickness

18.5 mm

Net weight

35 lb / 15.9 kg

N. pieces

24

Pebbles X Large / TPB 20021



Dimensions

W - 133 cm / 52.4"

H - 32.4 cm / 12.8"

L - 133 cm / 52.4"

Wood thickness

18.5 mm

Net weight

45 lb / 20.5 kg

N. pieces

24

Storm Coffee Table Set

Small, Medium and Large



Storm Small / TST 20001

Dimensions

W - 56 cm / 22"
H - 20.7 cm / 8.1"
L - 56 cm / 22"

Wood thickness

18.5 mm

Net weight

20 lb / 9.1 kg



Storm Medium/TST 20002



Dimensions

W - 78.2 cm / 30.8"

H - 37 cm / 14.6"

L - 77 cm / 30.3"

Wood thickness

18.5 mm

Net weight

30 lb / 13.6 kg

Storm Large / TST 20003



Dimensions

W - 120 cm / 47.2"

H - 25.9 cm / 10.2"

L - 120 cm / 47.2"

Wood thickness

18.5 mm

Net weight

36 lb / 16.4 kg

Storm Mini Coffee Table Set

Small, Medium, and Large



Storm Mini Small / TSM 20004

Dimensions

W - 32.6 cm / 12.8"

H - 24 cm / 9.4"

L - 34.9 cm / 13.7"

Wood thickness

18.5 mm

Net weight

20 lb / 9.1 kg



Storm Mini Medium / TSM 20005



Dimensions

W - 35.6 cm / 14"

H - 27.7 cm / 10.9"

L - 39.4 cm / 15.5"

Wood thickness

18.5 mm

Net weight

23 lb / 10.5 kg

Storm Mini Large / TSM 20006



Dimensions

W - 34.3 cm / 13.5"

H - 35.1 cm / 13.8"

L - 37.6 cm / 14.8"

Wood thickness

18.5 mm

Net weight

25 lb / 11.4 kg

Tapita Large / STA 20013



Dimensions

W - 40 cm / 15.7"

H - 46.5 cm / 18.3"

N. pieces

31

Wood thickness

15 mm

Net weight

25 lb / 11.4 kg

Tapita Small / STA 20025



Dimensions

W - 40 cm / 15.7"

H - 30 cm / 11.8"

N. pieces

20

Wood thickness

18.5 mm

Net weight

20 lb / 9.1 kg

Mola Coffee Table Set

Small, Medium, Large and XLarge.



Mola Coffee Table Small

MCT 20026

**Dimensions**

W - 69 cm / 27.1"

H - 18.5cm / 7.2"

L - 77cm / 30.3"

N. pieces

10

Wood thickness

18.5 mm

Net weight

70 lb / 31.7 kg

Mola Coffee Table Medium

MCT20027



Dimensions

W - 95 cm / 37.4"

H - 26 cm / 10.2"

L - 121 cm / 47.6"

N. pieces

14

Wood thickness

18.5 mm

Net weight

165 lb / 74.8 kg

Mola Coffee Table Large MCT20028



Dimensions

W - 127.5 cm / 50.1"

H - 33.4 cm / 13.1"

L - 161cm / 63.3"

N. pieces

18

Wood thickness

18.5 mm

Net weight

275 lb / 124.7 kg

ORBIT TABLE S

Dimensions

W - 40 cm / 15.7"
H - 12.5 cm / 5"
L - 170 cm / 66.9"

Net weight

80 lb / 36.4 kg

Width tolerance

+/- 5mm



ORBIT TABLE M

Dimensions

W - 60 cm / 23.6"
H - 28.5 cm / 11.2"
L - 155 cm / 61"

Net weight

110 lb / 50 kg

Width tolerance

+/- 5mm



ORBIT TABLE L

Dimensions

W - 52.5 cm / 20.7"
H - 41.5 cm / 16.3"
L - 140 cm / 59.1"

Net weight

130 lb / 50 kg

Width tolerance

+/- 5mm







Corozo Small / TCO 20101

Dimensions

W - 75.8 cm / 29.8"

H - 72 cm / 28.3"

L - 170 cm / 66.9"

N. pieces

41

Wood thickness

18.5 mm

Net weight

51 lb / 23.2 kg

Glass Dimensions | # people

*Not included

W - 130 cm / 51.2" | 6p

L - 260 cm / 102.4"

W - 130 cm / 51.2" | 8p

L - 280 cm / 110.2"

T - 19mm



Corozo Medium / TCO 20102

Dimensions

W - 55.5 cm / 21.9"

H - 72 cm / 28.3"

L - 198 cm / 78"

N. pieces

37

Wood thickness

15 mm

Net weight

54 lb / 24.8 kg

Glass Dimensions | # people

*Not included

W - 115 cm / 45.3" | 8p

L - 290 cm / 114.2"

W - 125 cm / 49.2" | 8p

L - 310 cm / 122"

T - 19mm



Corozo Large / TCO 20103

Dimensions

W - 75.8 cm / 29.8"

H - 72 cm / 28.3"

L - 240 cm / 94.5"

N. pieces

41

Wood thickness

18.5 mm

Net weight

128 lb / 58.3 kg

Glass Dimensions | # people

*Not included

W - 130 cm / 51.2" | 10p

L - 330 cm / 129.9"

T - 19mm



Corozo X Large / TCO 20104

\$ 6,120.00 exw

Dimensions

W - 75.8 cm / 29.8"

H - 72 cm / 28.3"

L - 280 cm / 110.2"

N. pieces

41

Wood thickness

18.5 mm

Net weight

176 lb / 80 kg

Glass Dimensions | # people

*Not included

W - 130 cm / 51.2" | 12p

L - 370 cm / 145.7"

T - 19mm

Ghost small / TGH 20113



Dimensions

W - 66.6 cm / 26.2"

H - 72 cm / 28.3"

L - 170 cm / 66.9"

N. pieces

36

Wood thickness

18.5 mm

Net weight

110 lb / 50 kg

Glass Dimensions | # people

*Not included

W - 125 cm / 49.2" | 8p

L - 260 cm / 102.4"

W - 130 cm / 51.2" | 8p

L - 280 cm / 110.2"

T - 19mm

Ghost Medium / TGH 20114



Dimensions

W - 66.6 cm / 26.2"

H - 72 cm / 28.3"

L - 198 cm / 78"

N. pieces

36

Wood thickness

18.5 mm

Net weight

130 lb / 59.1 kg

Glass Dimensions | # people

*Not included

W - 125 cm / 49.2" | 8p

L - 290 cm / 114.2"

W - 130 cm / 51.2" | 10p

L - 310 cm / 122"

T - 19mm



Ghost Large/TGH 20110

Dimensions

W - 66.6 cm / 26.2"

H - 72 cm / 28.3"

L - 220 cm / 86.6"

N. pieces

36

Wood thickness

18.5 mm

Net weight

140 lb / 63.6 kg

Glass Dimensions | # people

*Not included

W - 125 cm / 49.2" | 10p
L - 310 cm / 122"

W - 130 cm / 51.2" | 10p
L - 330 cm / 129.9"

T - 19mm



Candy Dining Medium/TCC 20111

Dimensions

W - 70 cm / 27.6"

H - 72 cm / 28.3"

L - 70 cm / 27.6"

N. pieces

38

Wood thickness

18.5 mm

Net weight

60 lb / 27.3 kg

Glass Dimensions | # people

*Not included

D - 140cm/55.1" | 4p
160cm/63" | 5p
180cm/70.9" | 6p

T - 19mm

Candy Dining Large / TCC 20128



Dimensions

W - 113 cm / 44.5"

H - 72 cm / 28.3"

L - 110 cm / 43.3"

N. pieces

61

Wood thickness

18.5 mm

Net weight

100 lb / 45.5 kg

Glass Dimensions | # people

*Not included

D - 180cm/70.9" | 6p

200cm/78.7" | 7p

220cm/86.6" | 7p

T - 19 mm

Candy Dining X Large / TCC 20129



Dimensions

W - 172 cm / 67.7"

H - 72 cm / 28.3"

L - 172 cm / 67.7"

N. pieces

61

Wood thickness

18.5 mm

Net weight

350 lb / 159.1 kg

Glass Dimensions | # people

*Not included

D - 260cm/102.4" | 9p

280cm/110.2" | 10p

T - 19 mm

Mola Medium/TMM20130



Dimensions

W - 66 cm / 26"

H - 72 cm / 28.3"

L - 198 cm / 78"

N. pieces

40

Wood thickness

18.5 mm

Net weight

100 lb / 45.5 kg

Glass Dimensions | # people

*Not included

W - 145 cm / 57.5" | 8/10p

L - 280 cm / 101"

T - 19 mm

Mola Large / TML20131



Dimensions

W - 78 cm / 30.7"

H - 72 cm / 28.3"

L - 256 cm / 100.75"

N. pieces

40

Wood thickness

18.5 mm

Net weight

140lb / 159.1 kg

Glass Dimensions | # people

*Not included

W - 160cm / 63" | 10/12p

L - 330 cm / 130"

T - 19 mm

Dumbo Large / TDM20133

Dimensions

W - 140 cm / 55.11"

H - 73.2 cm / 28.7"

L - 310 cm / 122.05"

Wood thickness

18.5 mm

Net weight

280 lb / 127.3 kg

people

10p



Dumbo Medium / TDL20134

Dimensions

W - 140 cm / 55.11"

H - 73.2 cm / 28.7"

L - 180 cm / 70.86"

Wood thickness

18.5 mm

Net weight

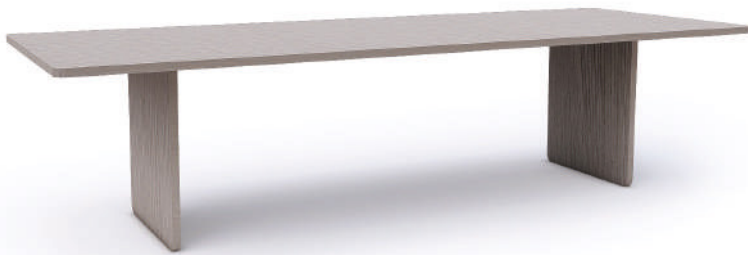
160 lb / 72.5 kg

people

6p



Sisan Small / TSS 20121



Dimensions

W - 111 cm / 43.7"

H - 73 cm / 28.7"

L - 300 cm / 118.1"

N. pieces

60

Wood thickness

18.5 mm

Net weight

280 lb / 127.3 kg

people

8 - 10p

Sisan Large / TSS 20127



Dimensions

W - 130 cm / 51.2"

H - 73 cm / 28.7"

L - 400 cm / 157.5"

N. pieces

70

Wood thickness

18.5 mm

Net weight

430 lb / 195.5 kg

people

10 - 12p



B 45 / TB 20106

Dimensions

W - 90 cm / 35.4"

H - 72 cm / 28.3"

L - 234 cm / 92.1"

Wood thickness

18 mm

Net weight

70 lb / 31.8 kg

people

6 - 8p

Corozo Console Small / TCC 20018



Dimensions

W - 43.5 cm / 17.1"

H - 72 cm / 28.3"

L - 170 cm / 66.9"

Net weight

55 lb / 25 kg

Glass Dimensions

*Not included

W - 54 cm / 21.3"
L - 190 cm / 74.8"

N. pieces

29

W - 64 cm / 25.2"
L - 210 cm / 82.7"

Wood thickness

15 mm

T - 19mm



Corozo Console Medium / TCC 20022

Dimensions

W - 43.5 cm / 17.1"

H - 72 cm / 28.3"

L - 198 cm / 78"

N. pieces

29

Wood thickness

15 mm

Net weight

60 lb / 27.3 kg

Glass Dimensions

*Not included

W - 54 cm / 21.3"

L - 220 cm / 86.6"

W - 64 cm / 25.2"

L - 240 cm / 94.5"

T - 19mm



Corozo Console Large / TCC 20019

Dimensions

W - 55.5 cm / 21.9"

H - 72 cm / 28.3"

L - 198 cm / 78"

N. pieces

37

Wood thickness

15 mm

Net weight

65 lb / 29.5 kg

Glass Dimensions

*Not included

W - 65 cm / 25.6"

L - 220 cm / 86.6"

W - 75 cm / 29.5"

L - 240 cm / 94.5"

T - 19mm



Sweep Console Small / TSC 20016

Dimensions

W - 42.5 cm / 16.7"

H - 61 cm / 24"

L - 165 cm / 65"

N. pieces

23

Wood thickness

18.5 mm

Net weight

54 lb / 24.5 kg



Sweep Console Medium / TSC 20017

Dimensions

W - 42.5 cm / 16.7"

H - 61 cm / 24"

L - 190 cm / 74.8"

N. pieces

23

Wood thickness

18.5 mm

Net weight

64 lb / 29.1 kg



Sweep Console Large / TSC 20021

Dimensions

W - 42.5 cm / 16.7"

H - 80 cm / 31.5"

L - 190 cm / 74.8"

N. pieces

23

Wood thickness

18.5 mm

Net weight

84 lb / 38.2 kg



Sweep Desk / TSD 20020

Dimensions

W - 50 cm / 19.7"

H - 73 cm / 28.7"

L - 190 cm / 74.8"

N. pieces

27

Wood thickness

18.5 mm

Net weight

90 lb / 40.9 kg

SWEEP BAR
\$5,609.00 exw



Dimensions

W - 55.5 cm / 21.85"
H - 90 cm / 35.43"
L - 376 cm / 148"

Net weight

200 lb / 90.9 kg

Width tolerance

+/- 5mm





Panelitos Orb Medium / LPO 40044

Dimensions

W - 60.7 cm / 23.9"

H - 59.6 cm / 23.5"

N. pieces

28

Wood thickness

1.5 mm

Net weight

10 lb / 4.5 kg



Panelitos Orb Large / LPO 40045

Dimensions

W - 89.8 cm / 35.4" H

- 88.1 cm / 34.7"

N. pieces

28

Wood thickness

1.5 mm

Net weight

20 lb / 9.1 kg



Panelitos Orb X Large / LPO 40046

Dimensions

W - 106.1 cm / 41.8"

H - 103.9 cm / 40.9"

N. pieces

28

Wood thickness

1.5 mm

Net weight

28 lb / 12.7 kg



Panelitos Sphere Medium / LPS 40029

Dimensions

W - 69.2 cm / 27.2"

H - 52.5 cm / 20.7"

N. pieces

30

Wood thickness

1.5 mm

Net weight

10 lb / 4.5 kg



Panelitos Sphere Large / LPS 40030

Dimensions

W - 92.2 cm / 36.3"

H - 69.4 cm / 27.3"

N. pieces

30

Wood thickness

1.5 mm

Net weight

18 lb / 8.2 kg



Panelitos Sphere X Large /

Dimensions

W - 105 cm / 41.3" H -

138.3 cm / 54.4"

N. pieces

30

Wood thickness

1.5 mm

Net weight

37 lb / 16.8 kg



Panelitos Donut Small / LPD 40041

Dimensions

W - 60 cm / 23.6"

H - 31.7 cm / 12.5"

Wood thickness

1.5 mm

Net weight

5 lb / 2.3 kg



Panelitos Donut Medium / LPD 40042

Dimensions

W - 75 cm / 29.5" H

- 39.2 cm / 15.4"

Wood thickness

1.5 mm

Net weight

8 lb / 3.6 kg



Panelitos Donut Large / LPD 40043

Dimensions

W - 90 cm / 35.4"

H - 47.1 cm / 18.5"

Wood thickness

1.5 mm

Net weight

12 lb / 5.5 kg



Panelitos Cipolla Medium / LPC 40058

Dimensions

W - 55.5 cm / 21.9"

H - 30.6 cm / 12"

Wood thickness

1.5 mm

Net weight

5 lb / 2.3 kg

N. pieces

24



Panelitos Cipolla Large / LPC 40059

Dimensions

W - 74 cm / 29.1"

H - 40.8 cm / 16.1"

N. pieces

24

Wood thickness

1.5 mm

Net weight

8 lb / 3.6 kg



Panelitos Cipolla XLarge / LPC 40060

Dimensions

W - 99.4 cm / 39.1" H

- 61.2 cm / 24.1"

N. pieces

24

Wood thickness

1.5 mm

Net weight

16 lb / 7.3 kg



Panelitos Dome Medium / LPD 40024

Dimensions

W - 69.2 cm / 27.2"

H - 29 cm / 11.4"

N. pieces

30

Wood thickness

1.5 mm

Net weight

12 lb / 5.5 kg



Panelitos Dome Large / LPD 40025

Dimensions

W - 92.2 cm / 36.3"

H - 38.2 cm / 15"

N. pieces

30

Wood thickness

1.5 mm

Net weight

18 lb / 8.2 kg

Panelitos Dome X Large / LPD 40026



Dimensions

W - 138.3 cm / 54.4"

H - 57.3 cm / 22.6"

N. pieces

30

Wood thickness

1.5 mm

Net weight

40 lb / 18.2 kg

Panelitos Elliptical / LPE 40032



Dimensions

W - 180 cm / 70.9" H -

31.3 cm / 12.3" L -

69.6 cm / 27.4"

N. pieces

40

Wood thickness

1.5 mm

Net weight

30 lb / 13.6 kg



Panelitos Hat / LPH 40027

Dimensions

W - 100 cm / 39.4"

H - 25 cm / 9.8"

N. pieces

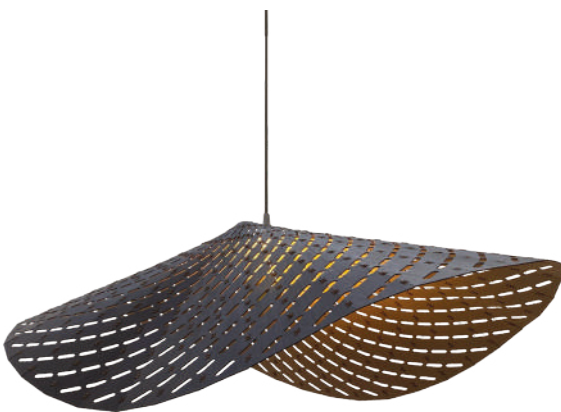
40

Wood thickness

1.5 mm

Net weight

8 lb / 3.6 kg



Panelitos Hat Large / LPH 40028

Dimensions

W - 126 cm / 39.4"

H - 35 cm / 9.8"

N. pieces

40

Wood thickness

1.5 mm

Net weight

20 lb / 9 kg



Panelitos Hat Flat / LPH 40061

Dimensions

W - 100 cm / 39.4"

H - 25 cm / 9.8"

N. pieces

40

Wood thickness

1.5 mm

Net weight

8 lb / 3.6 kg



Panelitos Long Small / LPL 40020

Dimensions

W - 30 cm / 11.8"

H - 60 cm / 23.6"

N. pieces

20

Wood thickness

1.5 mm

Net weight

5 lb / 2.3 kg



Panelitos Long Medium / LPL 40021

Dimensions

W - 45 cm / 17.7"

H - 90 cm / 35.4"

N. pieces

20

Wood thickness

1.5 mm

Net weight

6 lb / 2.7 kg



Panelitos Long Large / LPL 40022

Dimensions

W - 60 cm / 23.6"

H - 120 cm / 47.2"

N. pieces

20

Wood thickness

1.5 mm

Net weight

8 lb / 3.6 kg



Panelitos Mariel Medium

Dimensions

W - 26.7 cm / 10.5"

H - 47.7 cm / 18.7"

N. pieces

20

Wood thickness

1.5 mm

Net weight

8 lb / 3.6 kg



Panelitos Mariel Large LPM 40056

Dimensions

W - 40.2 cm / 15.8"

H - 71.2 cm / 28"

N. pieces

20

Wood thickness

1.5 mm

Net weight

15 lb / 6.8 kg



Panelitos Mariel XLarge

LPM 40057

Dimensions

W - 53.6 cm / 21.1" H
- 94.9 cm / 37.4"

N. pieces

20

Wood thickness

1.5 mm

Net weight

26 lb / 11.8 kg



Panelitos Teardrop Small LPD 40038

Dimensions

W - 39.8 cm / 15.7"
H - 60 cm / 23.6"

Wood thickness

1.5 mm

Net weight

12 lb / 5.5 kg



Panelitos Teardrop Medium

LPD 40039

Dimensions

W - 49.6 cm / 19.5"

H - 75 cm / 29.5"

Wood thickness

1.5 mm

Net weight

20 lb / 9.1 kg



Panelitos Teardrop Large LPD 40040

Dimensions

W - 59.5 cm / 23.4"

H - 90 cm / 35.4"

Wood thickness

1.5 mm

Net weight

28 lb / 12.7 kg



Panelitos Pineapple Small LPP 40035

Dimensions

W - 29.6 cm / 11.7"

H - 60 cm / 23.6"

Wood thickness

1.5 mm

Net weight

10 lb / 4.5 kg



Panelitos Pineapple Medium LPP 40036

Dimensions

W - 44.5 cm / 17.5"

H - 90 cm / 35.4"

Wood thickness

1.5 mm

Net weight

22 lb / 10 kg



Panelitos Pineapple Large / LPP 40037

Dimensions

W - 59.6 cm / 23.5"

H - 120 cm / 47.2"

Wood thickness

1.5 mm

Net weight

36 lb / 16.4 kg



Panelitos Twisted / LPT 40033

Dimensions

W - 41.7 cm / 16.4"

H - 240 cm / 94.5"

L - 60.6 cm / 23.9"

N. pieces

17

Wood thickness

1.5 mm

Net weight

24 lb / 10.9 kg



Panelitos 1 / LPO 40019

Dimensions

W - 50 cm / 19.7"

H - 43 cm / 16.9"

N. pieces

30

Wood thickness

1.5 mm

Net weight

6 lb / 2.7 kg



Panelitos Seta / PST 40051

Dimensions

W - 55.2 cm / 21.7"

H - 47.9 cm / 18.9"

L - 60 cm / 23.6"

N. pieces

20

Wood thickness

1.5 mm

Net weight

12 lb / 5.5 kg



Boomerang / LCB 40001

Dimensions

W - 51 cm / 20.1"

H - 25.9 cm / 10.2"

L - 49.2 cm / 19.4"

N. pieces

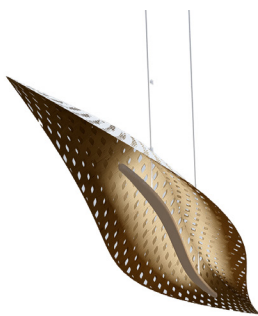
14

Wood thickness

18.5 mm

Net weight

15 lb / 7 kg



Panelitos Leaf / LPL 40062

Dimensions

W - 228cm / 89.8"

H - 55.3cm / 21.8"

N. pieces

27

Wood thickness

1.5 mm

Net weight

40lb / 18.1kg



Panelitos Tecomate / LPT 40068

Dimensions

W - 40.5cm / 15.9"

H - 120cm / 47.3"

N. pieces

55

Wood thickness

1.5 mm

Net weight

36lb / 16.3 kg



Panelitos Cigar Medium / LPC 40063

Dimensions

W - 23.5cm / 9.25"

H - 160cm / 63"

N. pieces

16

Wood thickness

3 mm

Net weight

12lb / 5.4 kg



Panelitos Cigar Large / LPC 40064

Dimensions

W - 29.4cm /

11.6"

H - 200cm / 78.7"

Wood thickness

3 mm

Net weight

15lb / 6.8 kg

N. pieces

16



Panelitos Flames Medium / LPF 40065

Dimensions

W - 60cm / 23.6"

H - 50cm / 19.7"

Wood thickness

1.5 mm

Net weight

12lb / 5.4 kg

N. pieces

30



Panelitos Flames Large / LPF 40065

Dimensions

W - 75cm / 29.5"

H - 62.8cm / 24.7"

N. pieces

30

Wood thickness

1.5 mm

Net weight

20lb / 8.1 kg



Panelitos Flames XLarge / LPF 40065

Dimensions

W - 90cm / 35.4"

H - 75.4 cm / 29.6"

N. pieces

30

Wood thickness

1.5 mm

Net weight

28lb / 12.7 kg



Panelitos Cap Medium / LPF 40069

Dimensions

W - 60cm / 23.6"

H - 51.2cm / 20.2"

N. pieces

30

Wood thickness

1.5 mm

Net weight

15lb / 6.8 kg



Panelitos Cap Large /40070

Dimensions

W - 120 cm / 47.2"

H - 102cm / 40.2"

N. pieces

30

Wood thickness

1.5 mm

Net weight

30lb / 13.6 kg



Panelitos Cap XLarge /40070

Dimensions

W - 90cm / 35.4"

H - 76.8cm / 30.2'

N. pieces

30

Wood thickness

1.5 mm

Net weight

24lb / 10.9 kg



Panelitos Batz

Dimensions

W - 32 cm / 12.6"

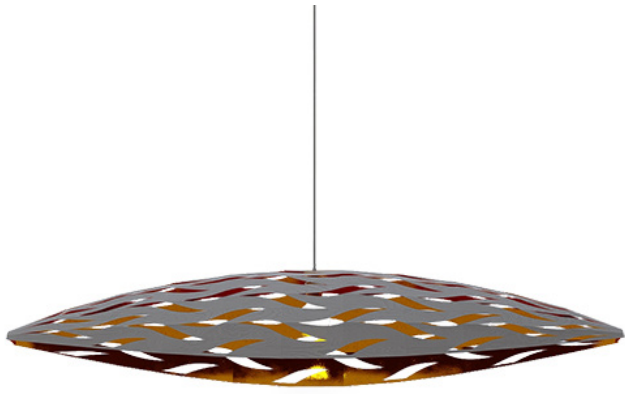
H - 80 cm / 31.5"

Width tolerance

+/- 5mm

Net weight

24 lb / 10.9 kg



Panelitos Corozo

Dimensions

W - 150 cm / 59.1"
H - 25 cm / 10"
L - 40 cm / 16"

Net weight

20 lb / 9.1 kg

Width tolerance

+/- 5mm

Solar Spots S



Dimensions

W - 28.4 cm / 11.2"
H - 28.2 cm / 11.1"
D - 4.1 cm / 1.6"

Net weight

5 lb / 2.3 kg

Width tolerance

+/- 5mm

Solar Spots M



Dimensions

W - 47.7 cm / 18.8"
H - 50.5 cm / 19.9"
D - 7.6 cm / 3"

Net weight

7 lb / 3.2 kg

Width tolerance

+/- 5mm

Solar Spots L



Dimensions

W - 47.7 cm / 18.8"
H - 50.5 cm / 19.9"
D - 11.1 cm / 4.4"

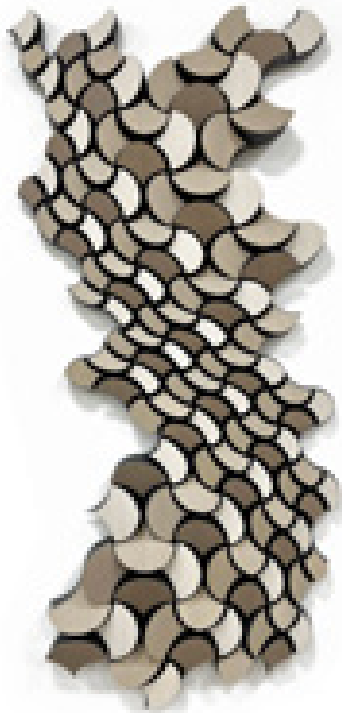
Net weight

10 lb / 4.5 kg

Width tolerance

+/- 5mm





Little Abanicos / ATS 30027

Dimensions

Length
109 cm / 42.91"

Height
226 cm / 88.97"

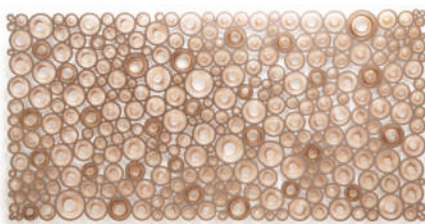
Depth
13 cm / 5.11"

Modules

133

Net weight

220.46 lb / 100 kg



Circles of Time / STC 30022

Dimensions

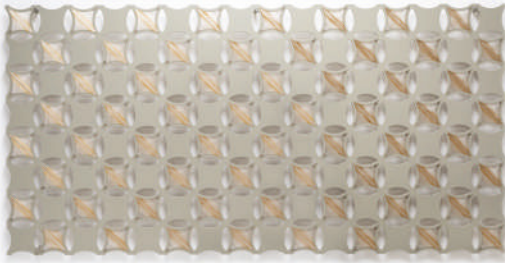
L - 240 cm / 94.5"
H - 120 cm / 47.2"
D - 1 cm / 0.4"

Modules

1

Net weight

35 lb / 15.9 kg



Stars / SST 30024

Dimensions

L - 240 cm / 94.5"

H - 120 cm / 47.2"

D - 1 cm / 0.4"

Modules

1

Net weight

35 lb / 15.9 kg



Ovals / SOT 30012

Dimensions

L - 240 cm / 94.5"

H - 120 cm / 47.2"

D - 1 cm / 0.4"

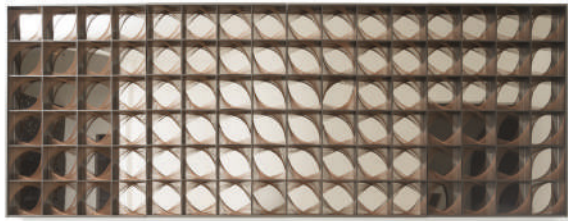
Modules

1

Net weight

35 lb / 15.9 kg

Image compose of two modules



Mirror Attractor / SMA 30020

Dimensions

L - 320 cm / 126"

H - 120 cm / 47.2"

D - 11 cm / 4.3"

Modules

96

Net weight

325 lb / 147.7 kg



Prism Large / SPR 30014

Dimensions

L - 415.6 cm / 163.6"

H - 80 cm / 31.5"

D - 13 cm / 5.1"

Modules

168

Net weight

110 lb / 50 kg



Double Curvature Large / SDC 30016

Dimensions

L - 300 cm / 118.1"

H - 150 cm / 59.1"

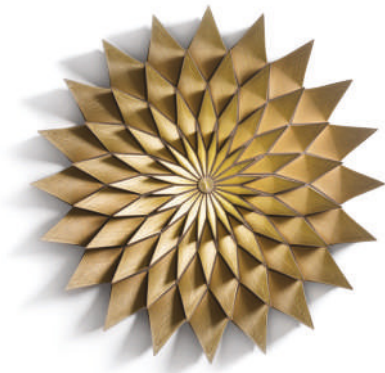
D - 26 cm / 10.2"

Modules

74

Net weight

110 lb / 50 kg



Girasol Threads Large / SPR 30018

Dimensions

L - 150 cm / 59.1"

H - 150 cm / 59.1"

D - 18 cm / 7.1"

Modules

80

Net weight

80 lb / 36.4 kg



Arrows / SAR 30023

Dimensions

L - 24 cm / 9.45"

H - 60 cm / 23.6"

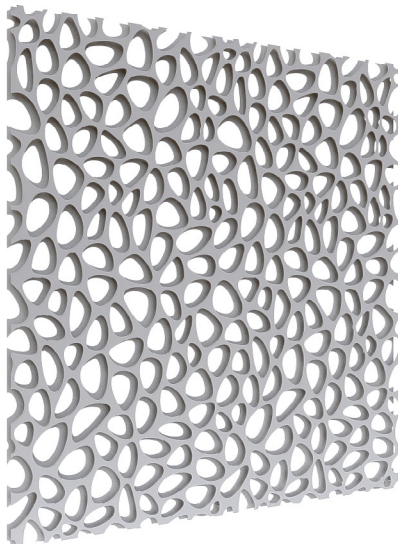
D - 13 cm / 5.1"

Modules

5

Net weight

20 lb / 9.1 kg



IRREGULAR OVALS THREADED

Dimensions

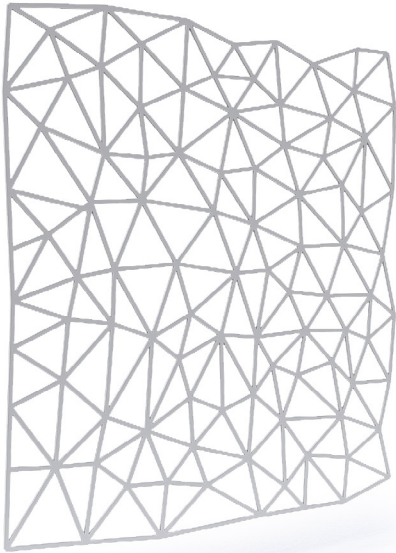
L - 240 cm / 94.5"
H - 240 cm / 94.5"
D - 5 cm / 1.9"

Net weight

140 lb / 31.8 kg

Width tolerance

+/- 5mm



TRIANGLES THREATED SCREEN

Dimensions

L - 215 cm / 84.6"
H - 240 cm / 94.5"
D - 1 cm / 0.4"

Net weight

35 lb / 15.9kg

Width tolerance

+/- 5mm





Godot / EGD 60003

Dimensions

W - 56 cm / 22"

H - 80 cm / 31.5"

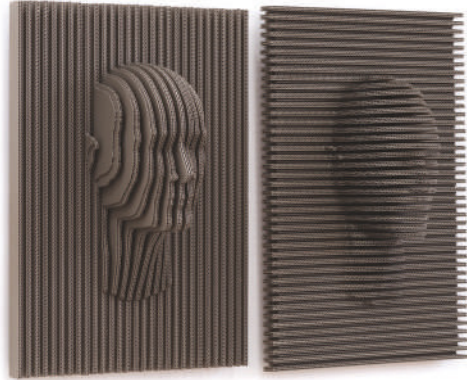
L - 85 cm / 33.5"

Wood thickness

4 mm

Net weight

25 lb / 11.4 kg



Faces Set / EFC 60006

Dimensions

W - 52 cm / 20.5"

H - 72 cm / 28.3"

D - 27 cm / 10.6"

Thickness

4 mm

Net weight

10 lb / 4.5 kg



Inner Face - Outer Face / EIO 60012

Dimensions

W - 45 cm / 63"

H - 63 cm / 24"

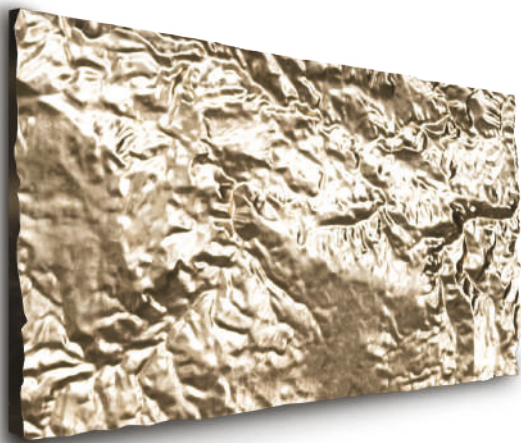
D - 10 cm / 3.9"

Thickness

4 mm

Net weight

40 lb / 18.2 kg



Patterns of the Earth / EPE 60013

Dimensions

W - 240 cm / 94.5"

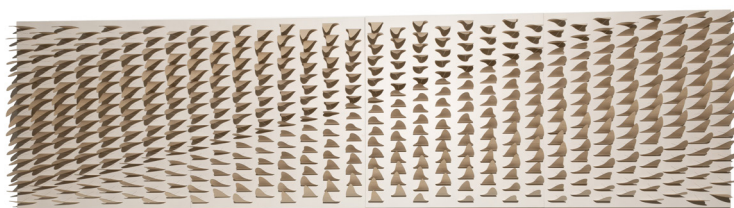
H - 120 cm / 47.2"

D - 15 cm / 5.9"

Thickness

5 mm

FOLIA



Dimensions

W - 472 cm / 185.83"

D - 25 cm / 9.85"

L - 118 cm / 46.5"

Net weight

120 lb / 54.43 kg

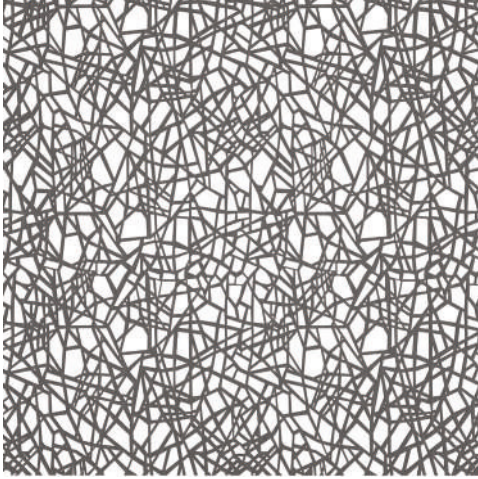
Width tolerance

+/- 5mm

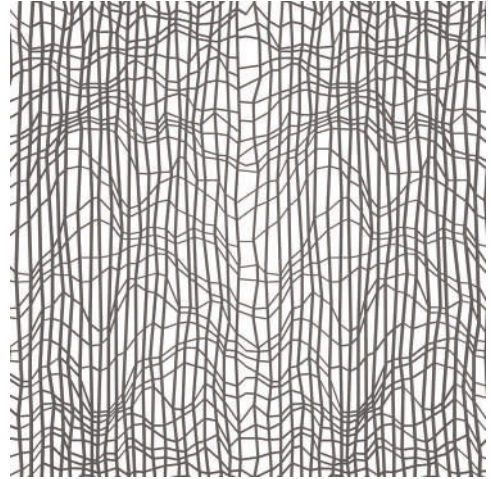


Organic

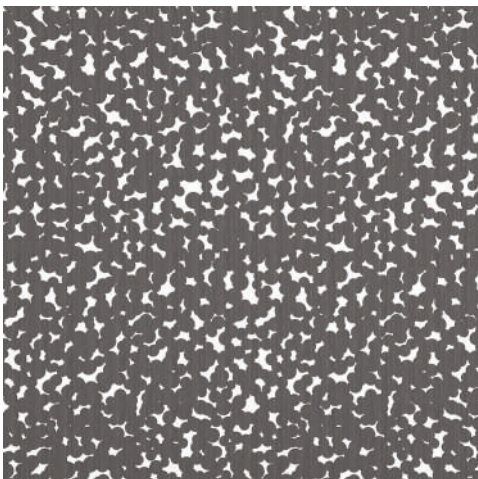
Crackle / PRC 30003



Fisher net / PFN 30004

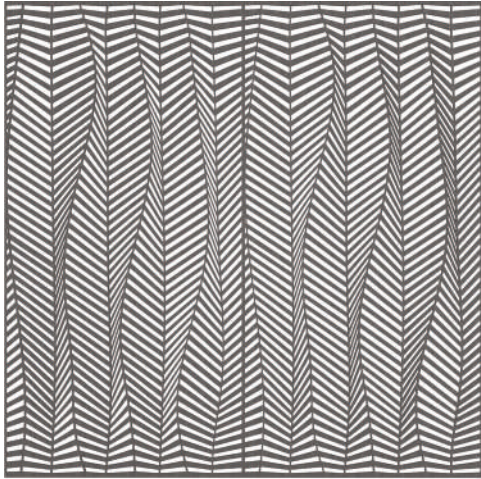


Close dots / PCD 300015

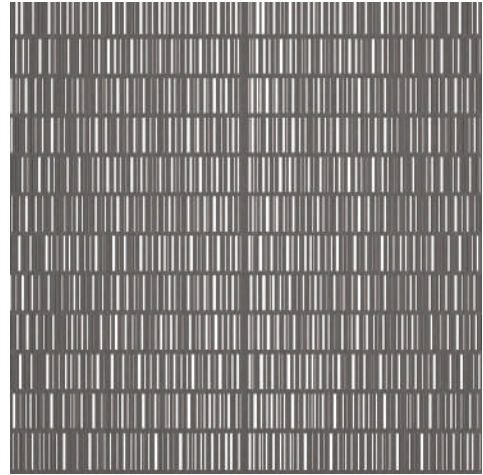


Geometric

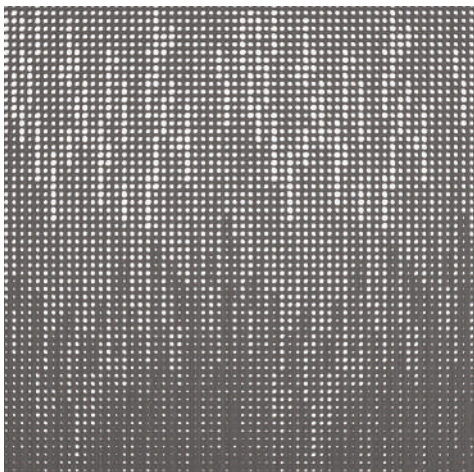
Zig Zag / PZZ 30007



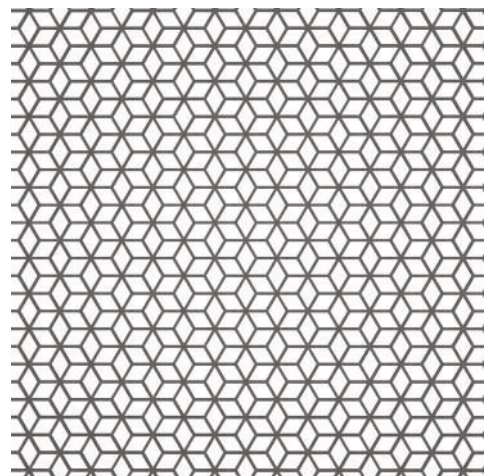
Bar code / PCB 300010



Degrade holes / PDH 300018

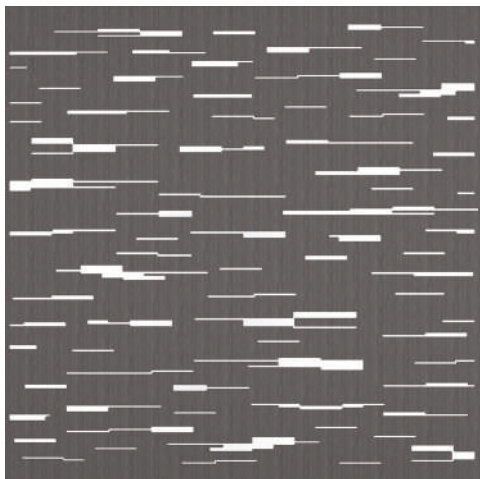


Cubes / PCU 300020



Parametric

La Chinita / PLC 300025



Wood

ACM

PVC PAINTED

PVC

Dimensions

Width
120 cm / 47.244"

Height
240 cm / 94.49"

Net weight

Wood
55 lb / 25.1 kg

ACM
35 lb / 15.8 kg

PVC
32 lb / 14.5 kg

Conditions of use

Wood, PVC
This screens can be used only indoors.

ACM, ACRYLIC
This screens can be used indoors and outdoors.

Maintenance

Clean with slightly wet cloth, use only water, don't use any type of solvent.

The screens are suitable for dividing spaces or to decorate a wall or a ceiling.

Wood colors



Grey Solid



Grey Lines



Oak Solid



Oak Lines



Natural Solid



Natural Lines



Cold Grey Solid



Cold Grey Lines



Maple Solid



Maple Lines



Milky White Solid



Milky White Lines



Dark Walnut Solid



Dark Walnut Lines



Grey Graphite Solid



Grey Graphite Lines

Bamboo colors



Natural



Ivory



White



Oak



Milky Ivory



Milky White



Dark Walnut



Grey



Cold Grey



Grey Graphite

Fabric colors



Panama 818



Panama 816



Panama 824



Panama 804



Panama 825



Raytent 201



Raytent 801





© Distributors Prices 2023 by Piegatto
All rights reserved.

No unauthorized copying or dissemination of any kind.